



水泥地面角铝支架

产品说明/DESCRIPTION:

- 安装位置/Installation place:  
水泥地面/Cement floor
- 斜面支架组件/Module slop:  
根据实际需求/According to the practical demand
- 风力承载能力/Wind load:  
40m/s、32.5kg/m<sup>2</sup>、13级
- 雪载承受力/Snow load:  
70kg/m<sup>2</sup>
- 支架类型/Module type  
框架/Frame
- 材料/Material:  
铝型材/Aluminium profile
- 颜色/Colour:  
本色/Natural
- 使用年限/Warranty time:  
25 years.

本系统由以下零部件组成/This system consists of the following components:



- ADVANTAGES:**
1. 多样化应用/Diversified Application.
  2. 通用的兼容性/Universal Compatibility.
  3. 容易便捷安装/Easy and flexible Installation.
  4. 可以大量安装太阳能组件/The quantity of the modules that could be installed is large.

工程实例照片



1 第一步/First step

The L angle aluminum connecting piece fixed on the cement ground with expansion bolts, as shown below:

将L角铝连接件用膨胀螺栓固定在水泥地面上，如图所示：



Figure 1

3 第三步/Third step

The guide rail is fixed on the angle aluminum front support with T type bolt M8\*25, as shown in fig.:

将导轨用M8\*25的T型螺栓固定在角铝前撑上，如图所示：



Figure 3 (a)



Figure 3 (b)

2 第二步/Second step

Use M8\*30 bolts to front support and the back support angle aluminum fixed on the angle aluminum connecting piece, as shown below:

用M8\*30的螺栓将角铝前撑和后撑固定在角铝连接件上，如图所示：



Figure 2 (a)

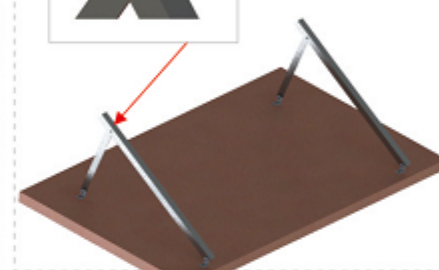


Figure 2 (b)

4 第四步/Fourth step

The solar module with edge block, medium pressure block and T type bolt is fixed on the guide rail, as shown in fig.:

将太阳能组件用边压块、中压块及T型螺栓固定在导轨上，如图所示：

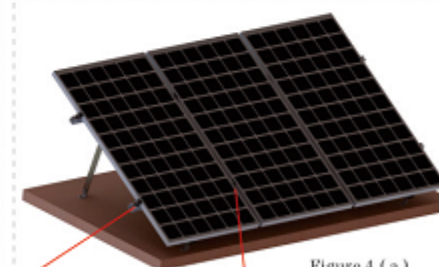


Figure 4 (a)

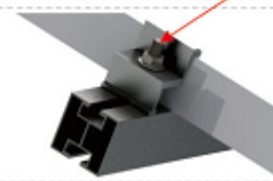


Figure 4 (b)



Figure 4 (c)